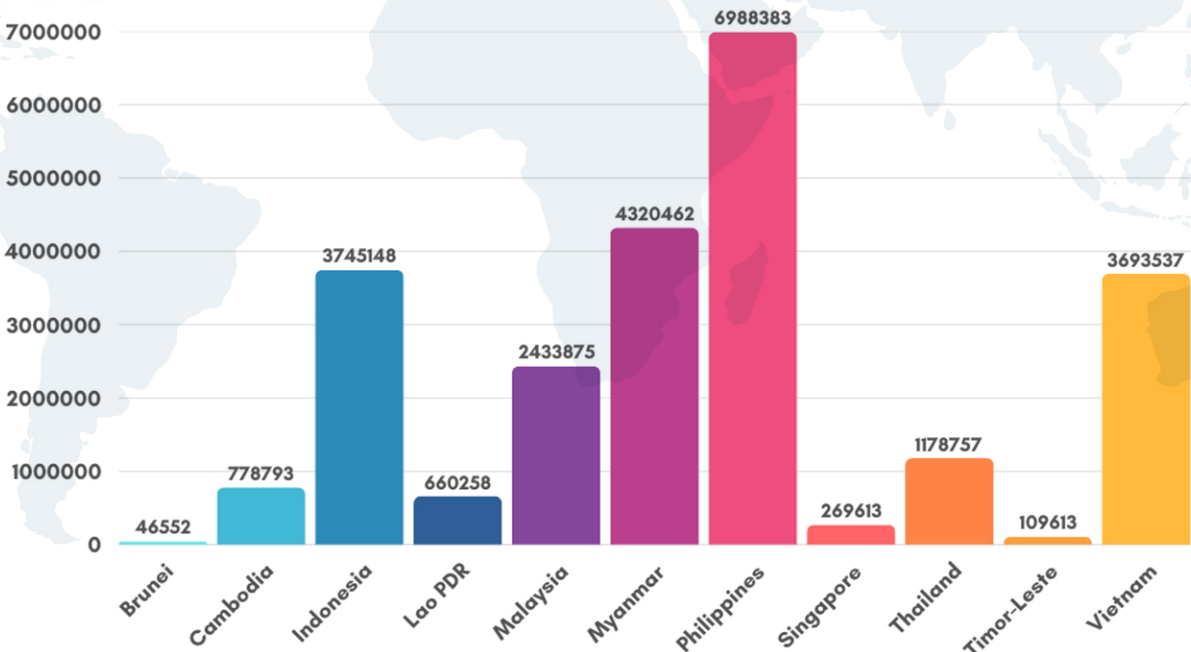


MIGRATION 2025

COMPILED BY S.NANTHINI

In 2024, there were an estimated **304 million migrants** in the world, 24.22 million of whom are from Southeast Asia (including Timor Leste). Of the 11.03 million number of international migrants living and working in Southeast Asia, 7.12 million of migrants are from the region.

TOTAL NUMBER OF MIGRANTS (2024)

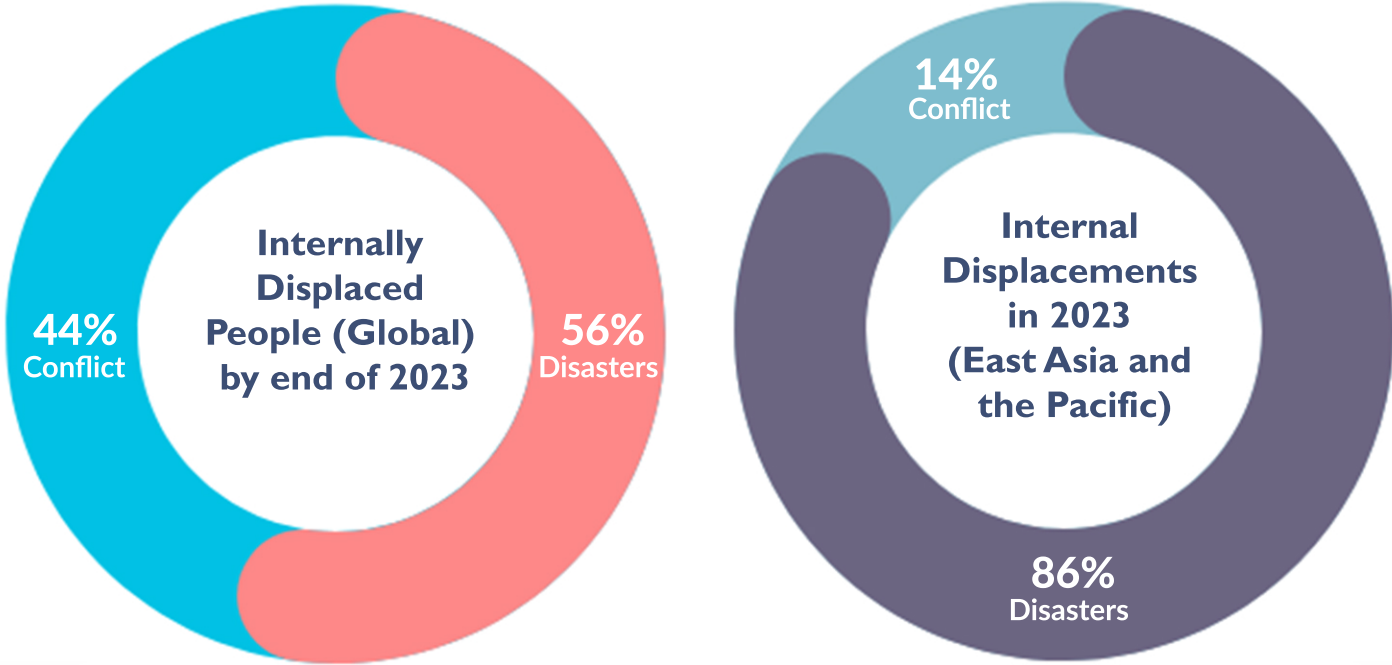


Source: Compiled from United Nations Department of Economic and Social Affairs, Population Division (2024). International Migrant Stock 2024.

INTERNALLY DISPLACED PERSONS

By the end of 2023, there was a record high of **75.9 million** internally displaced people around the world. This reflects an increase of 51% over the past five years. In 2023 alone, 46.9 million people were internally displaced. Out of this number, 26.4 million people were displaced by disasters while 20.5 million people were displaced due to conflict and violence.

Disasters triggered more than 50% of internal displacements globally in 2023. A significant number of these displacements emerged from the **Türkiye-Syria earthquakes with 4.7 million**.



During 2023, **10.5 million people** were internally displaced in the East Asia and the Pacific. At 22% of the global share, this region recorded the highest number of disaster displacements globally.

Out of this, approximately **9 million people** were displaced due to disasters. Out of the top 5 most affected countries in the region, 4 countries (Philippines, Myanmar, Indonesia and Malaysia) belong to the Southeast Asian region.

Source: IDMC 2024, "Global Report on Internal Displacement 2023", IDMC, accessed 1 March 2025.
United Nations Department of Economic and Social Affairs, Population Division (2024). International Migrant Stock 2024.